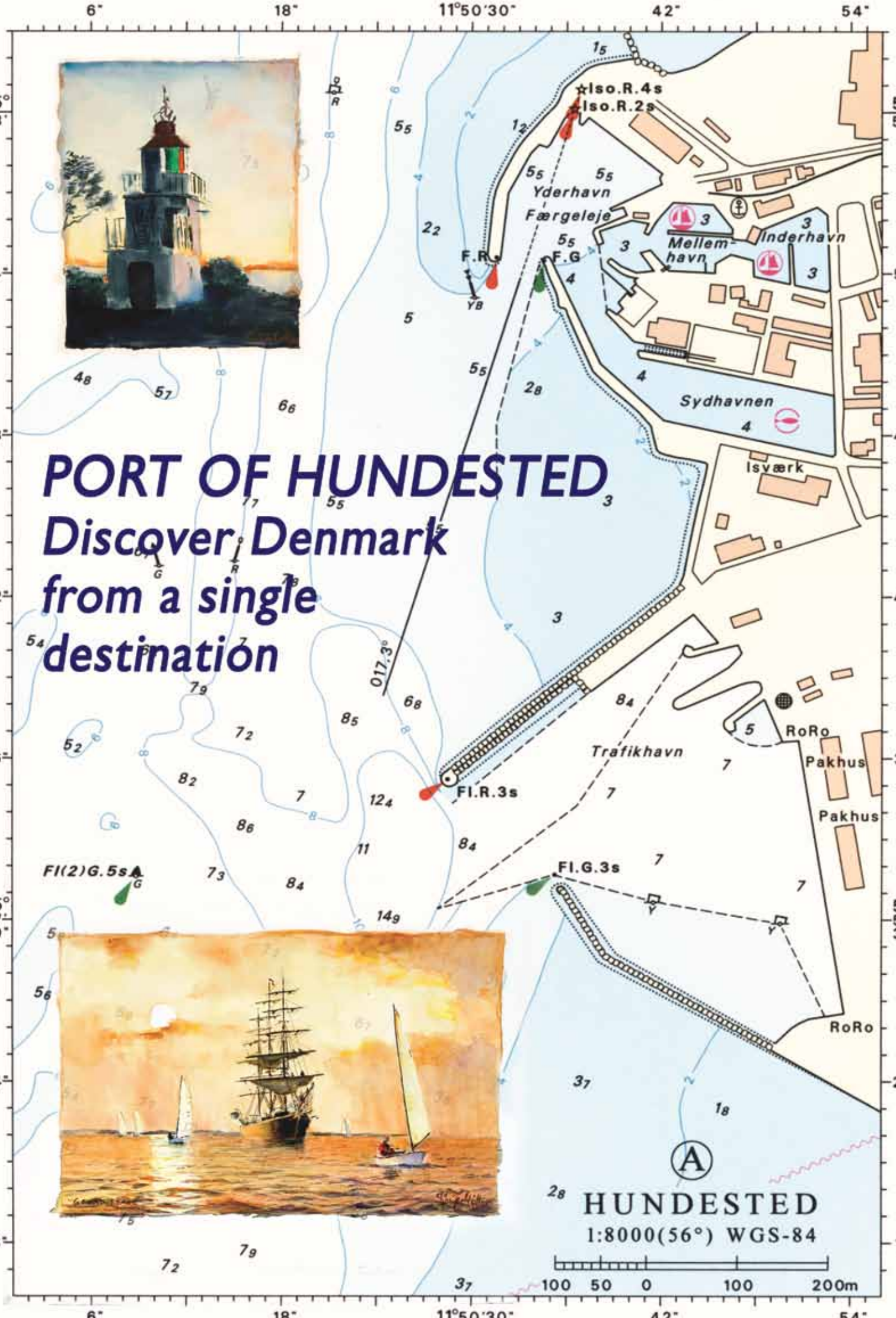




# PORT OF HUNDESTED

Discover Denmark  
from a single  
destination





# HUNDESTED NORTH ZEALAND

An oasis north of Copenhagen

Once a small fishing harbour today an idyllic town with a lively harbor dotted with coastal cargo ships, ferries, fishing boats and sailing boats galore.



Still the town retains its old-fashioned charm with cozy little restaurants offering a variety of fresh fish and seafood, and small shops where personal service and a friendly chat with customers are deeply integrated in the local lifestyle. The special light from “the three waters” that surround Hundested has attracted many artists and you will find several art studios representing all sorts of “-isms” in and around the town.



*The famous Greenlandic polar explorer Knud Rasmussen's House at Hundested.*

If you enjoy swimming, there is a wonderful blue flag beach next to the harbour.

Hundested is located just 65 km/40 miles northwest of Copenhagen.

## Royal North Zealand

North Zealand was for many years “the playground” of the Danish kings, and it is therefore home to a number of very interesting castles



This bus tour will take you to three of the most significant among them. Frederiksborg Castle in Hillerød houses the national historic collection of Denmark including paintings and furniture from the past and a collection of portraits which is continuously expanding to include prominent artists of today.

A Baroque Garden adjoins the castle. You will also see Fredensborg Castle, the summer residence of the royal family even today and Kronborg at Elsinore immortalized by Shakespeare as the castle of Hamlet.



## Meet the Vikings – if you dare!

Just 30 km/18 miles from Hundested at Frederikssund there is a Viking settlement with long-houses and other houses built to simulate the original settlement excavated on the ground.

Every summer open-air performances tell the story of Viking life including fierce sword fights, lure playing and mead drinking. Further down south in Roskilde you will see the Viking Ship Museum displaying 5 Viking long-boats – sunk more than 1000 years ago in Roskilde Fjord. Visiting Roskilde naturally includes a visit to Roskilde Cathedral with the tombs of most of the Danish kings and queens.



*The Viking Ship Museum at Roskilde.*



Marine paintings by Joh. E. Møller

## Hundested and surroundings

Visit to an art gallery and a working glassworks in the harbour. A short walk away you will find an entrenchment securing the narrow entrance of the Fjord by means of 4 cannons. The cannons are still used every year when celebrating Constitution Day. Further north the Greenland explorer Knud Rasmussen's House is situated beside an old lighthouse. By train or bus the tour continues to the old cannon foundry "Gjethuset" of Frederiksværk (12 km/8 miles away) that supplied many of the armies of Europe with guns 250 years ago. Today Gjethuset is used for more peaceful purposes such as concerts and exhibitions. A visit to the gunpowder factory where you can still see the machinery working is included in the tour.



## Shopping Tour to Hillerød

All day long there is regular train service directly from Hundested Harbour taking you to the center of Hillerød, the capital of North Zealand. The trip takes just half an hour. Here you will find everything to delight the shopper: old, new, modern, antiques – you name it!



Barrow with burial chamber from the Bronze Age.



## Useful links

**Port information:** [www.hundestedhavn.dk](http://www.hundestedhavn.dk)  
**Tourist information:** [www.visithalsnaes.dk](http://www.visithalsnaes.dk)

## Public information

**Tourist information:** On pier  
**Downtown:** 0,5 km/0,3 miles  
**Taxi:** +45 4848 4848  
**Shopping:** Downtown and in harbour  
**Local currency:** Danish krone, DKK  
**Airport:** Copenhagen, 80 km/50 miles

## Port information

**Port:** Port of Hundested  
**Address:** Amtsvejen 2,  
DK - 3390 Hundested  
**Phone:** +45 4793 7234  
**E-mail:** [mail@hundestedhavn.dk](mailto:mail@hundestedhavn.dk)  
**Fax:** +45 4793 7578  
**Web:** [www.hundestedhavn.dk](http://www.hundestedhavn.dk)

**Time zone:** UTC +1  
(European Summer Time: UTC +2)  
**VTS channel:** VHF ch. 16/12/13  
**ISPS 24 h contact:** +45 2123 7234  
**Maximum ship dimensions:**  
Length 180 m. Draft: 8.0 m. Beam: 25 m.  
**Pilot:** Available  
**Waste handling:** All kinds





HUNDESTED HAVN | AMTSVEJEN 2 | 3390 HUNDESTED | [www.hundestedhavn.dk](http://www.hundestedhavn.dk)